

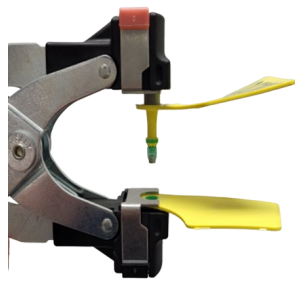
Cattle Tissue Sampling

Ear Tagging Instructions



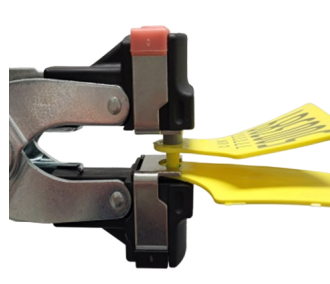
1

- Push sprung metal clip upwards, tilt clip back.
- Load female side of tag, with sample into hole.
- Separate the male side.



2

- Load male side of tag onto pin. Push firmly onto pin.
- Ensure cutting ring is present and straight.



3

- Apply tag to ear, male pin to be in between cartilage ribs.
- Close applicator swiftly and fully. A click will be heard when tag halves are locked together.



4

- Release tag by fully opening applicator.
- Sample tube will remain in applicator.



5

- Carefully remove sample tube from applicator by pushing from below.



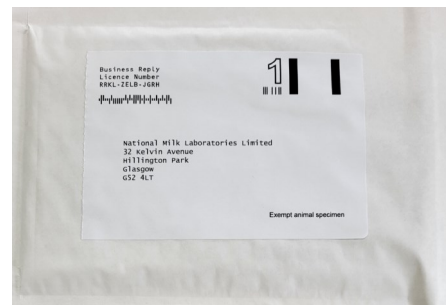
6

- Check tube is sealed and contains a sample of tissue.
- Store samples in a cool dry place.
- Store liquid tubes so that the sample is always covered by liquid.

zgetis GeneTracker
Ear Tag Submission Form
GeneEze
NMRQ NORDIC STAR
Form with fields for Name, Sex, Breed, etc.

7

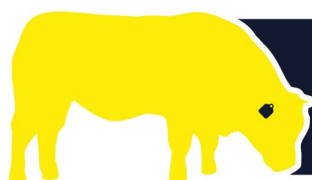
- Complete any paperwork necessary for submitting samples.
- Maximum of 10 samples per submission.



8

- Post samples back to the relevant NMR laboratory in Freepost envelope provided. (If you are not sending samples to NMR labs, please arrange postage to your chosen testing provider.)
- **White BVD sample tubes to Glasgow**
- **Pink DNA sample tubes to Harrogate**

If you encounter any issues when sampling, please call the office 0800 731 9465



NORDIC STAR

From NMRQ

For advice and assistance please contact
Nordic Star Customer Services

0800 731 9465 | tags@nmrp.com
More at www.nordicstar.co.uk